

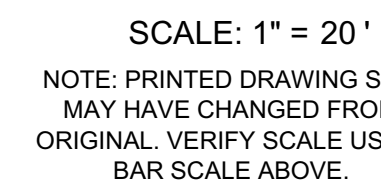


SYMBOL	MANUFACTURER/MODEL/DESCRIPTION	QTY	PSI	GPM	RADIUS
	HUNTER PGJ-06 1.0 TURF ROTOR, 6IN. POP-UP, ADJUSTABLE AND FULL CIRCLE.	10	30	0.85	18'
	HUNTER PGJ-06 1.5 TURF ROTOR, 6IN. POP-UP, ADJUSTABLE AND FULL CIRCLE.	2	30	1.3	21'
	HUNTER PGJ-06 2.5 TURF ROTOR, 6IN. POP-UP, ADJUSTABLE AND FULL CIRCLE.	1	30	2.2	27'
	HUNTER PGJ-06 3.0 TURF ROTOR, 6IN. POP-UP, ADJUSTABLE AND FULL CIRCLE.	7	30	2.5	30'
	HUNTER PGJ-06 4.0 TURF ROTOR, 6IN. POP-UP, ADJUSTABLE AND FULL CIRCLE.	5	30	3.7	33'
	HUNTER PGJ-06 5.0 TURF ROTOR, 6IN. POP-UP, ADJUSTABLE AND FULL CIRCLE.	9	30	4.7	36'

Valve Callout

- # Valve Number
- # Valve Flow
- # Valve Size

1. ALL SOD AND LANDSCAPE TO RECEIVE 100% COVERAGE WITH 100% OVERLAP FROM AN AUTOMATIC IRRIGATION SYSTEM USING AN APPROVED WATER SOURCE.
2. A RAIN SENSOR MUST BE INSTALLED TO OVER-RIDE THE CONTROLLER.
3. BUBBLERS TO BE PROVIDED FOR NEW AND RELOCATED TREES AND PALMS.
4. CONTRACTOR IS RESPONSIBLE FOR ALL CONDITIONS AND IRRIGATION SPECIFICATION ATTACHED TO THIS PLAN. PLAN AND SPECIFICATIONS SHALL BE CONSIDERED CONTRACT DOCUMENTS.
5. INVESTIGATE TO DETERMINE AND VERIFY THE LOCATION OF UNDERGROUND UTILITIES BEFORE EXCAVATION.
6. REFER TO SHEET LI-501 FOR ADDITIONAL IRRIGATION SPECIFICATIONS AND DETAILS.
7. NOZZLE SELECTION BASED ON COVERAGE REQUIREMENTS.



STATUS: DRC SUBMITTAL